



Noninvasive brain measurement and analysis

Biointerface Units

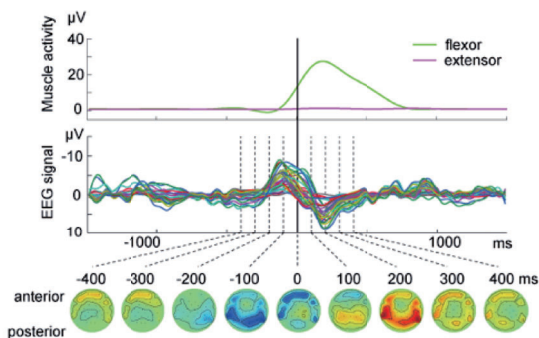
Intelligent Information Processing Research Core, FIRST

<http://www.cns.pi.titech.ac.jp>

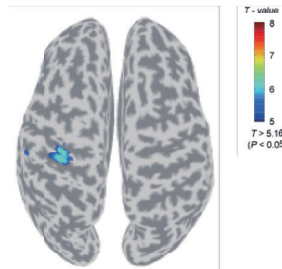
- Brain Machine Interface
- Computational Neuroscience
- Brain Function analysis
- Human Interface using biological signals

Modeling of brain function about control and learning method

Brain activities during motion



fMRI



Computational Model

