



Takashi Obi Lab

Medical information/image processing technology supporting aging society

Lab. for Future Interdisciplinary Research of Sci. and Tech.
Advanced research center for Social Information Sci. and Tech.

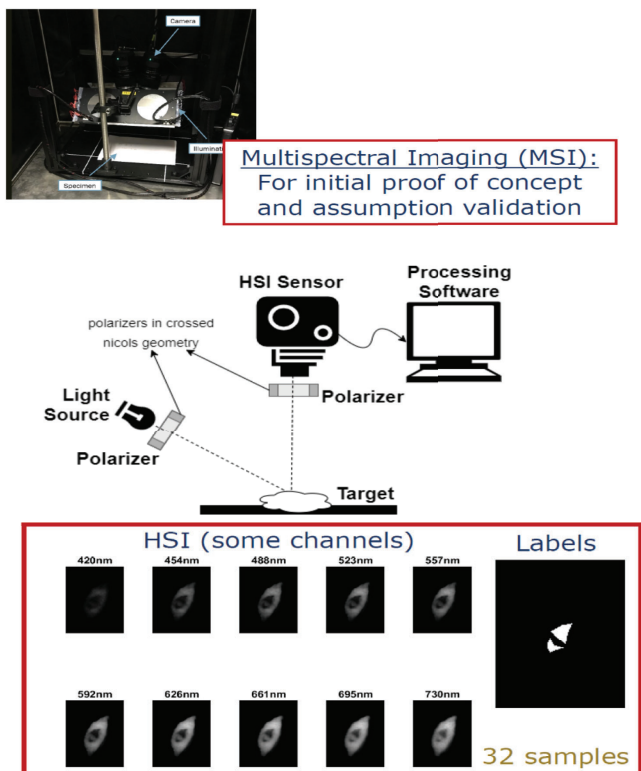
<http://www.msii.first.iir.titech.ac.jp>

- Information/Image processing to realize health society
- Technology utilizing medical health information
- National eIDAS and security in the medical field

We are researching and developing medical image/Information processing technology that are necessary for the aging society in Japan.

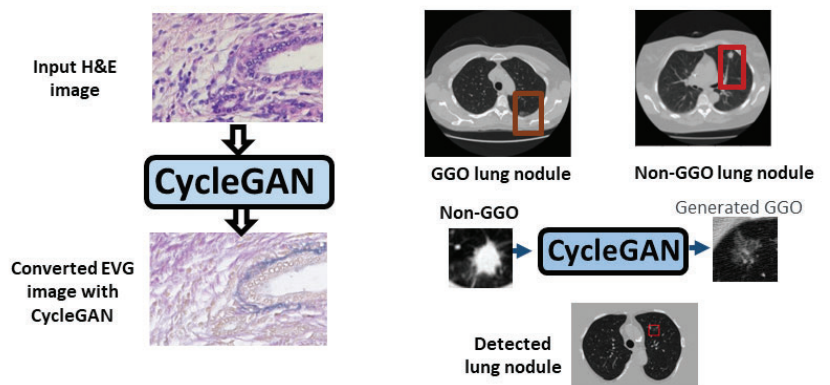
The image processing technology required for new medical equipment such as the multispectral pathological imaging system and medical data analysis technology based on quality data to support individuals.

In addition, we are developing PHR system, network technology and National identity and authentication technology. The research result of our laboratory is the VPN technology currently used in the medical field and the authentication technology required to realize the online insurance qualification check using My Number card.



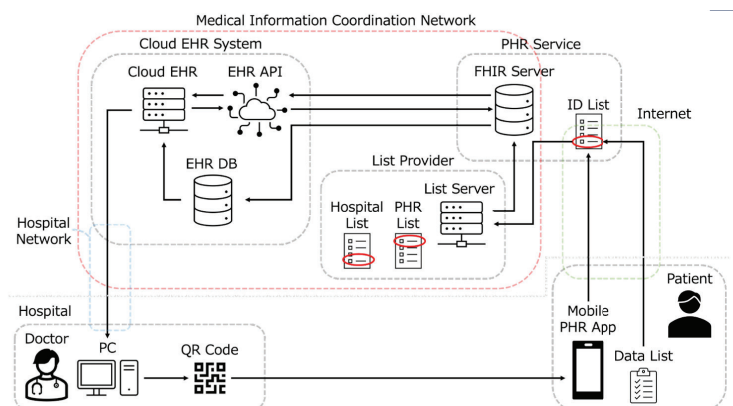
Use of hyperspectral images in macro-pathology

Converting color of microscopic image



Aiding early detection of lung cancer

Apply CycleGAN to medical image processing



Study for PHR system utilization in medical institutions